



Inside this issue:

Landscape	2
Party Time	2
Annual Assessments	3
Pool & Playground	3
Management Co. & Board	4
Resident Spotlight	4

IT'S TIME TO CARVE SOME PUMPKINS

by: Kim Zech

Why do we carve pumpkins for Halloween? I always have a party to do it because it is so much fun but never knew the history behind it. So, I went to the internet and found the history.com website which had this explanation.

"The practice originated from an Irish myth about a man nicknamed "Stingy Jack." According to the story, Stingy Jack invited the Devil to have a drink with him. True to his name, Stingy Jack didn't want to pay for his drink, so he convinced the Devil to turn himself into a coin that Jack could use to buy their drinks. Once the Devil did so, Jack decided to keep the money and put it into his pocket next to a silver

cross, which prevented the Devil from changing back into his original form. Jack eventually freed the Devil, under the condition that he would not bother Jack for one year and that, should Jack die, he would not claim his soul. The next year, Jack again tricked the Devil into climbing into a tree to pick a piece of fruit. While he was up in the tree, Jack carved a sign of the cross into the tree's bark so that the Devil could not come down until the Devil promised Jack not to bother him for ten more years.

Soon after, Jack died. As the legend goes, God would not allow such an unsavory figure into heaven. The Devil, upset by the trick Jack had

played on him and keeping his word not to claim his soul, would not allow Jack into hell. He sent Jack off into the dark night with only a burning coal to light his way. Jack put the coal into a carved-out turnip and has been roaming the Earth with ever since. The Irish began to refer to this ghostly figure as "Jack of the Lantern," and then, simply "Jack O'Lantern."

Have a safe and candy filled Halloween. Remember the little ones will be out and about. Please, keep your speed down when driving in the neighborhood.



KEEP IT SAFE THIS HALLOWEEN

A few safety tips from the U.S. Consumer Product Safety Commission can protect children who plan to go trick-or-treating this Halloween.

Treats: Warn children not to eat any treats before an adult has carefully examined them for evidence of tampering.

Flame Resistant Costumes: When purchasing a costume, masks, beards, and wigs, look for the label Flame Resistant. Although this label does not mean these items won't catch fire, it does indicate the items will resist burning and should extinguish quickly once removed from the ignition source. To minimize the risk of contact with candles or other sources of

ignition, avoid costumes made with flimsy materials and outfits with big, baggy sleeves or billowing skirts.

Costume Designs: Purchase or make costumes that are light and bright enough to be clearly visible to motorists.

For greater visibility during dusk and darkness, decorate or trim costumes with reflective tape that will glow

LANDSCAPING BY RHONDA

The landscape committee and WHF board are working hard to improve our neighborhood by adding landscape to our common areas and maintaining those areas.

The boxes at 544 and Heritage have new lights and will have landscape added soon. Bids are being taken now.

Benches will be added to the quarry in October for all you wildlife watchers. The quarry is located on Zachary Walk and is available to all WHF homeowners.

The holidays are just around the corner and we need help with our decorating committee. If you are interested in helping put up decorations, please contact myself or someone on the board. Just offering to put up one wreath is a big help.

Thanks, Rhonda Durrill



Winter Lawn Care Dos and Don'ts

Although you might like to think of a winter lawn as being maintenance free, you'll need to take a few important steps to ensure that your lush green turf returns in the spring. A little upkeep now will save you time and money fixing potential pest and disease problems. Here are a few helpful winter maintenance dos and don'ts for your winter lawn.

Do allow for proper drainage

Drainage is crucial to prevent root rot. Make sure there is no water standing in or around your yard.

Do protect your lawn with mulch or peat moss

In areas with snowfall, consider spreading a thin layer of organic mulch or peat moss on top of the lawn before the first frost to provide nutrients throughout the winter. Don't suffocate it; just a sprinkle will do.

Do keep pulling weeds

In a region that doesn't get blanketed by much snow, you may notice that weeds grow faster than grass in the winter. Pull the weeds by hand as soon as they pop up to avoid their spreading, since uncontrolled weed growth could kill the grass.

Don't spray herbicide on dormant grass

Cold soil may not absorb herbicide chemicals properly, and the subsequent chemical buildup can turn into harmful runoff in the spring.

Don't fertilize dormant grass

Warm-season grasses that go dormant in cool weather should not be fertilized during the winter. It's best to fertilize in the more temperate months of March and October, when the grass is primed to absorb nutrients.

Don't walk on snow-covered or frozen grass

Foot traffic damages frozen grass, making it vulnerable to pests and diseases such as Fusarium patch.

Don't mow after the first frost

A fresh-cut grass blade is more susceptible to disease in cold weather. However, cool-season grasses should be mowed regularly to retain moisture.

This information is from Home Depots Garden Club.

Rhonda Durrill

Landscape Coordinator

IT'S PARTY TIME

**Hill Farms Fall Festival
2010
October 24th
3-5pm at the Clubhouse**

FREE fun activities: balloon artist, games, bounce house, huge slide, dunk tank, popcorn and drinks, costume parade @4:30 for those dressed up, train rides & treats!

Email Jamie Heise to help!
jamaheise@yahoo.com



KEEP IT SAFE THIS HALLOWEEN CONTINUED FROM PAGE 1

in the beam of a car's headlights. Bags or sacks should also be light colored or decorated with reflective tape. Reflective tape is usually available in hardware, bicycle, and sporting goods stores.

To easily see and be seen, children should also carry flashlights. Costumes should be short enough to prevent children from tripping and falling.

Children should wear well-fitting, sturdy shoes. Mother's high heels are not a good idea for safe walking.

Hats and scarves should be tied securely to prevent them from slipping over children's eyes.

Apply a natural mask of cosmetics rather than have a child wear a loose-fitting mask that might restrict breathing or obscure vision. If a mask is used, however, make sure it fits securely and

has eyeholes large enough to allow full vision.

Swords, knives, and similar costume accessories should be of soft and flexible material.

Pedestrian Safety: Young children should always be accompanied by an adult or an older, responsible child. All children should WALK, not run from house to house and use the sidewalk if available, rather than walk in the street. Children should be cautioned against running out from between parked cars, or across lawns and yards where ornaments, furniture, or clotheslines present dangers.

Choosing Safe Houses: Children should go only to homes where the residents are known and have outside lights on as a sign of welcome. Children should not enter homes or apartments unless they are accompanied by an adult.

People expecting trick-or-treaters should remove anything that could be an obstacle from lawns, steps and porches. Candlelit jack-o'-lanterns should be kept away from landings and doorsteps where costumes could brush against the flame. Indoor jack-o'-lanterns should be kept away from curtains, decorations, and other furnishings that could be ignited.



ANNUAL ASSESSMENT DUE DATE IS COMING SOON

Act Now! Don't be late with your payment.

The WHF HOA Board wants to remind you that your 2011 Annual Assessment will arrive in your mailbox by December 10 and will be due on January 1, 2011. Any payment made past that date will incur a

monthly late fee charges and interest. If you cannot make a full payment by that date, contact Principle Management Group in advance or you will be subject to the charges.

**COMMUNICATION IS KEY. CALL
TO MAKE PAYMENT
ARRANGEMENTS NOW!**

Thank you.
Mark Dalglish,
Treasurer



POOL AND PLAYGROUND

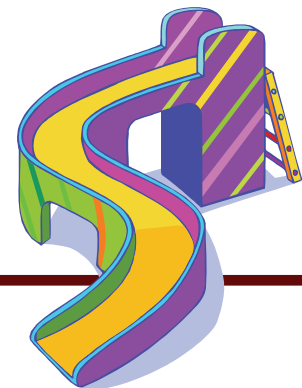
The pool will close on October 18th. We hope everyone had a good time swimming this summer.

The water will be turned off in the bathhouses to avoid freeze damage, and the lounge chairs will be put away for the winter. The pool will continue to be serviced during the winter so it will be in good shape for next season. Everyone is

still free to use the clubhouse patio but be sure to stay away from the covered pool, as the cover will not prevent someone falling into the pool if they should step on it. If you see any problems at the pool during the winter, please let us know.

The pump house next to the playground will be undergoing repair or reconstruction during the winter so you need to be

alert for construction activity when your children use the playground.



The HOA also currently retains a management company that performs a variety of functions for the community, such as vendor negotiations and standards enforcement.

Principal Management Group

12700 Park Central Drive, Suite 600
Dallas, TX 75251
Ph: (214) 368-4030 ext 6410
Toll-free: (888) 368-4030
Fax: (214) 361-7874

[Corrin Adger](#) is our management contact

cadger@principal-mgmt.com

For clubhouse reservations contact

[Shannon Bankston](#) at (214)265-6426 or

sbankston@principal-mgmt.com

BOARD OF DIRECTORS

Amy Nutz, Board President

anutz@windyhillfarmshoa.com

Mark Dalglish, Treasurer

mark.dalglish@windyhillfarmshoa.com

Kim Zech, Secretary

kimz@windyhillfarmshoa.com

Alex Acuña, Board Member

alexacuna@windyhillfarmshoa.com

Joe Richardson, Board Member

jrichardson@windyhillfarmshoa.com

Email the Board of Directors as a group
whfboard@windyhillfarmshoa.com

Visit our website at www.windyhillfarmshoa.com to learn more about our community and how you can become involved. All of our committees need help. ~ Why not see if there is a committee that is right for you?

RESIDENT BUSINESS SPOTLIGHT



Frost Décor and More

☎ *214-284-1080* ☎

"Your Home Stylist"

Frost Décor and More is a Certified Home Staging and Redesign business focused on bringing style to your home. Whether you need to change the rooms in your home to appeal to many buyers or wanting to create a space that reflects your personality, Frost Décor and More is your preferred home stylist!

We assist our clients with Color selection, Home redesign using current items around your home or purchase new items, Complete interior redesign of flooring, countertops, furniture, window treatments, etc. We can assist you with Staging your home to sell quickly - getting you Top Dollar, Seasonal and special occasion decorating and much more. Additionally, we work with many honest and professional contractors who we can refer to you, to make your house...your Dream Home!

Visit our website at www.frostdecorandmore.com for more information and before and after photos.

All Windy Hill Farms Owners who call within the next 30 days will receive a 20% discount off of our services.