

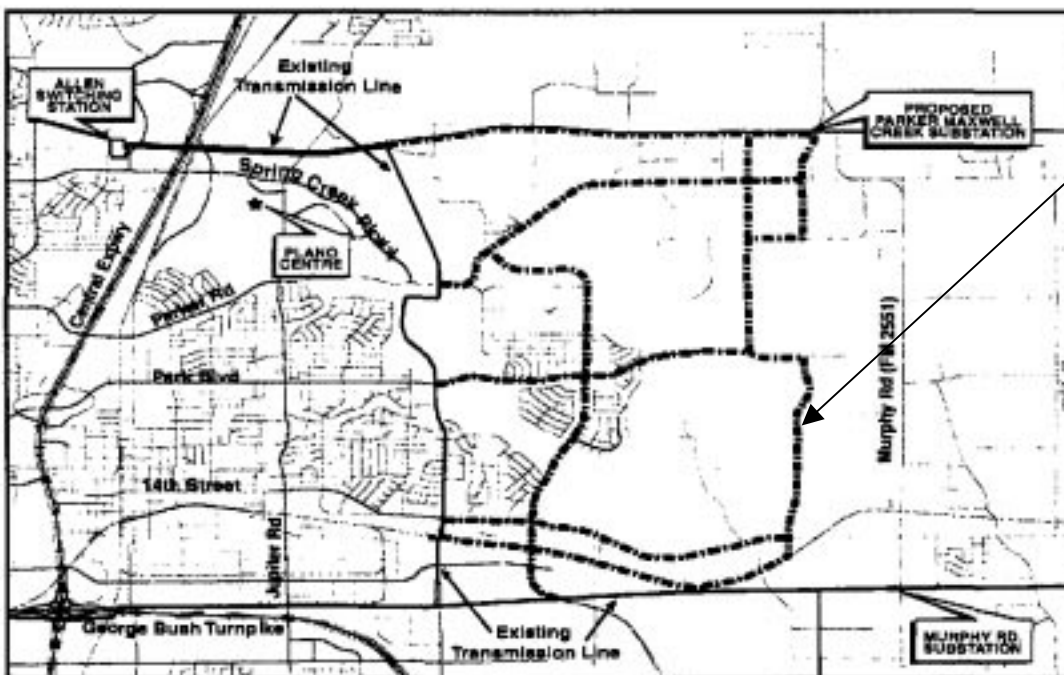
NOTICE OF PUBLIC PARTICIPATION MEETING FOR THE PROPOSED PARKER MAXWELL CREEK 138 KV TRANSMISSION LINE PROJECT

Oncor Electric Delivery Company, a member of the TXU family of companies, is proposing to construct a new 138 kilovolt (kV) electric transmission line in Collin County. The proposed transmission line will be approximately 3-7 miles long, depending upon the alternative route certificated by the Public Utility Commission of Texas. The proposed transmission line will connect the proposed Parker Maxwell Creek Substation (to be located west of Church Street and north of Parker Road) to an existing 138 kV transmission line which extends from the existing Oncor Allen Switching Station (located west of Central Expressway and north of Spring Creek Parkway) to a point located west of the existing Oncor Murphy Road Substation (located west of Murphy Road) in Collin County, Texas.

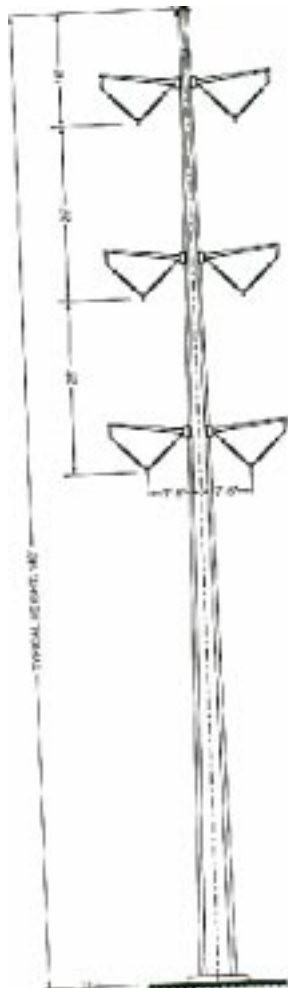
Oncor is committed to routing the proposed transmission line in a manner consistent with the values of the local communities, the Texas Utilities Code, the Public Utility Commission of Texas Rules and Policies, and the need to provide reliable electric service to this area of Collin County. In order to accomplish this, Oncor wants to solicit input for use in determining the preferred route for the proposed transmission line and share information about line routing alternatives. PBS&J, a consulting firm retained by Oncor for the project, has identified preliminary alternative transmission line routes for consideration which are shown as dashed lines on the map below and will be available to discuss these routes. Maps with greater detail will be exhibited at the meeting. Individuals attending this 'come and go' open house meeting will have an opportunity to ask questions and make comments to representatives and technical experts from Oncor and PBS&J regarding the routing of the proposed transmission line. These preliminary alternative routes are subject to modification based on further study and the results of this public meeting. If you have any questions concerning this meeting, please contact Robert Holt at (214) 486-7888.

**** Note: the Line running North and South noted by the long arrow closest to Murphy Rd is Heritage Pkwy!**

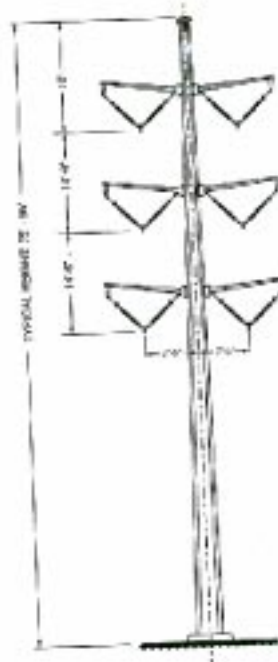
March 30- Tuesday 4:00-8:00 pm
Piano Centre
2000 E. Spring Creek Parkway
Piano, Texas 75074



A TXU Company



TYPICAL DOUBLE CIRCUIT 138 KV STEEL POLE STRUCTURE FOR ALIGNMENT ADJACENT TO EXISTING 345 KV TRANSMISSION LINE



TYPICAL DOUBLE CIRCUIT 138 KV STEEL POLE STRUCTURE

